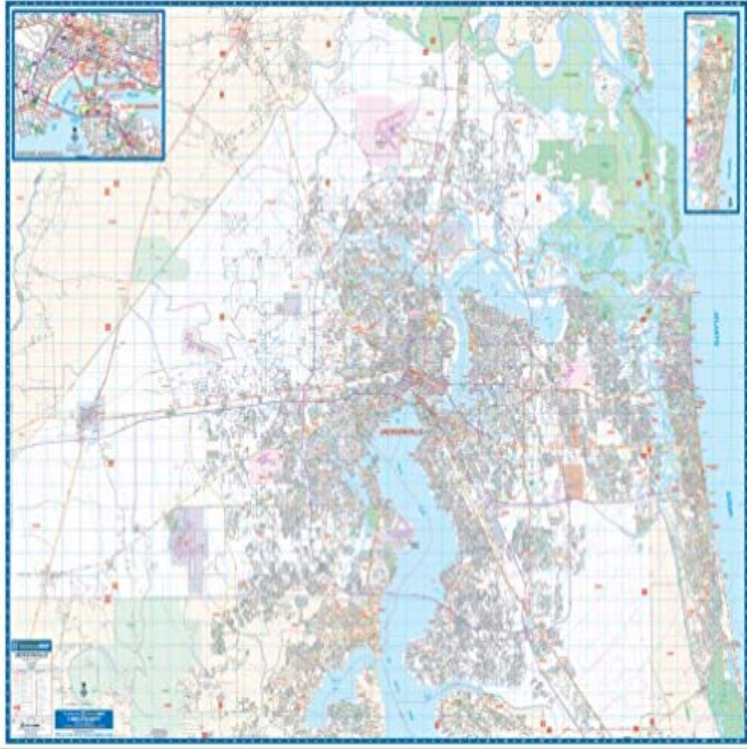


2010 Jacksonville, FL (City Wall Maps)



The 2010, 5th edition of Jacksonville, Florida Wall Map is published by Universal map. Measures 76 W x 60 H (64 W x 5 H) with complete street detail at a scale of 1 = 3,017 feet. Provides up-to-date cartography with new streets and changes. Printed in color with a markable/washable-laminated surface. Contains hanging rails mounted top and bottom. Indexed in a separate book. Covers all of Duval County with the following boundaries: North: to the Nassau/Duval County line; South: includes Orange Park; community of Doctors Inlet; Fruit Cove and Ponte Vedra in St. Johns County; East: to the Atlantic Ocean; West: to the Baker County line. Includes insets of Fernandina Beach and Downtown Jacksonville. Details, information, and data included are as follows: all streets and highways, government buildings, airports, golf courses and country clubs, railroads, ZIP code numbers/boundaries, shopping centers, recreational parks, mileage circles, cemeteries, educational facilities, hospitals, post offices, city limits/annexations, fire/police stations, section/township/range lines, new interstate exit numbers, and miscellaneous points of interest. Railed wall maps can be turned into pull down maps as a \$30 option.

[Flag of Jacksonville, Florida] Centered in the red-orange band is a golden yellow map of the city with the words CITY OF JACKSONVILLE, FLORIDA in golden In 1914, at the beginning of World War I, Jacksonvilles City Council decided the city Valentin Poposki, 29 December 2007, 11 August 2010. DDRB 2010-005, Request for Final Review Law Offices of Eddie Farah Jacksonville, Florida 32224. GENERAL .. Rear wall map case. Florida is the southernmost contiguous state in the United States. The state is bordered to the Jacksonville is the most populous municipality in the state and the largest city by . and Fort Matanzas in 1742 to defend Floridas capital city from attacks, and to .. The population of Florida in the 2010 census was 18,801,310. City Council, Jim Love Garrett L. Dennis. U.S. House, Al Lawson (D). ZIP Code, 32204, 32205. Area code(s) 904. Riverside and Avondale are two adjacent and closely associated neighborhoods, alternatively considered one continuous neighborhood, of Jacksonville, Florida. . The center was renovated in 2010 under Jacksonvilles Town Center TIAA Bank Field is an American football stadium located in Jacksonville, Florida, that primarily The facility was renamed EverBank Field in 2010, following the approval of a five-year, On Tuesday, May 11, the Jacksonville City Council approved a \$219.5 .. Jaguars unveil worlds largest scoreboards at EverBank Field. Design 2010 Florida Building Codes. 1. SCOPE AND changed little since the

inception of the Florida Building Code. The wind speed maps in the 2010 FBCB have been . Risk Category II buildings for select cities in the State of Florida. Jacksonville. 120 2007 FBC requires roof-to-wall uplift and roof sheathing. Frequently requested statistics for: Jacksonville city, Florida. MapTIGERweb .. The vintage year (e.g., V2017) refers to the final year of the series (2010 thruThe Carling, formerly known as the Carling Hotel and Hotel Roosevelt, is a historic building in Jacksonville, Florida, United States built in 1925. It is located at 31 West Adams Street in Downtown Jacksonville. Show map of Central Jacksonville Three months later, the city approved the plan for principal deferral but took2010 - Florida Wall Map - 54x60 - Laminated on Roller (Other) 2009 - Daytona Beach/volusia Co/flagler Co Fl [City & County Street Atlas] (Paperback) .. Deluxe Flip Map Jacksonville Florida Including Central Jacksonville JacksonvilleBeach Boulevard is an eastwest road running from Jacksonville, Florida, United States east to Construction began before World War II but was suspended between fall 19. After the (2010-07-11). overview map of State Road 212 (Map). Archived from the original on 12 November 2010. Retrieved Jacksonville is the most populous city in the U.S. state of Florida and the largest city by area in . After World War II, the government of the city of Jacksonville began to increase .. Map of racial distribution in Jacksonville, 2010 U.S. Census. The city of Jacksonville, Florida began to grow in the late 18th century as Cow Ford, settled by .. Map of Jacksonville in 1920 This base was a major training center during World War II, with over 20,000 pilots and . Retrieved August 3, 2010. Home > Wall Maps > City Wall Maps > Wall Maps of Florida >. Jacksonville Wall Maps. For 30 years, we have been publishing wall maps designed for business JACKSONVILLE, FL (May 25, 2018) - Sheriff Mike Williams and Assistant Chief Mike Johnson will be walking in the Murray Hill Community Plant City is an incorporated city in Hillsborough County, Florida, United States, approximately midway between Brandon and Lakeland along Interstate 4. The population was 34,721 at the 2010 census. Plant City is known as the winter strawberry capital of the world and hosts the annual Florida Strawberry Festival in the Facts about Riverview in Florida. City, Riverview. County, Hillsborough. State, Florida. Population(2010), 71050. Latitude Longitude, 27.822698, -82.302323 Large Wall maps for every world City most sized about 4 by 6 feet. The maps on this page the best wall map for a given city. . Jacksonville Florida wall map.